



Crown Dale, SE19 | £265,000

020 8702 9333

crystalpalace@pedderproperty.com

pedder
We live local



In General

- One bedroom apartment
- Balcony
- Modern executive development
- Lift access
- Opposite Norwood Park
- West Norwood and Gipsy Hill rail links
- Underground parking

In Detail

A well presented one bedroom second floor apartment forming a modern executive development opposite Norwood Park.

This fresh and inviting property is available for sale with no onward chain and presents an ideal opportunity for a buyer seeking a hassle-free first time or investment purchase. The living space is socially open-plan to the kitchen and extends to 22ft with direct access to a balcony which has a sunny southerly aspect. The bedroom is also well proportioned, whilst a neat bathroom and fitted hallway storage complete the accommodation. Further benefits include a lift and secure underground parking.

Crown Dale is primarily served by Gipsy Hill, West Norwood, and Crystal Palace rail links. A wealth of shopping and leisure amenities are nearby at the Crystal Palace Triangle, also West Norwood High Street and Gipsy Parade.

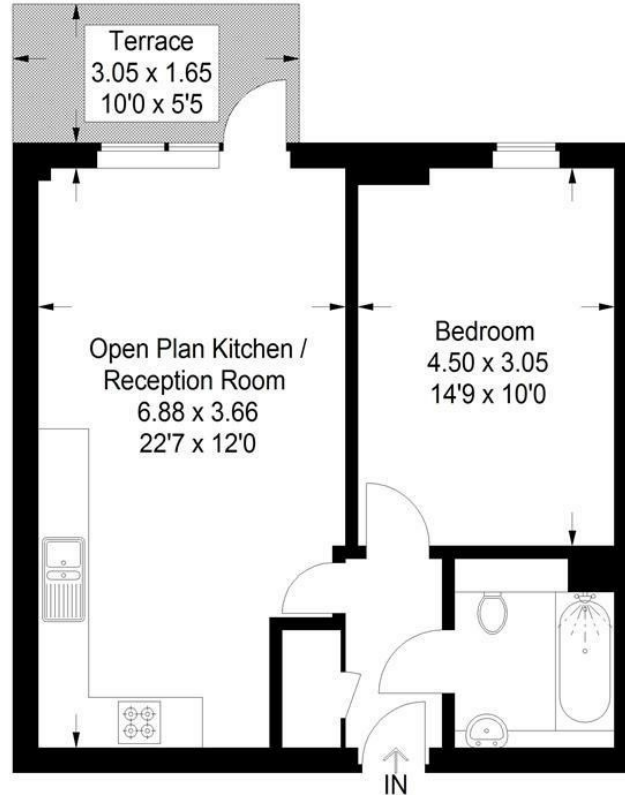
EPC: B | Council Tax Band: C | Lease: 233 years remaining | SC: £2,700 pa | GR: £230pa | BI: £300 PA



Floorplan

Crowndale, SE19

Approximate Gross Internal Area
47.6 sq m / 512 sq ft



Second Floor

Copyright www.pedderproperty.com © 2024
 These plans are for representation purposes only as defined by RICS - Code of Measuring Practice. Not drawn to Scale. Windows and door openings are approximate. Please check all dimensions, shapes and compass bearings before making any decisions reliant upon them.

Energy Efficiency Rating		Current	Potential
Very energy efficient - lower running costs			
102 plus) A			
81-101) B		83	83
69-80) C			
55-68) D			
39-54) E			
21-38) F			
1-20) G			
Not energy efficient - higher running costs			
England & Wales	EU Directive 2002/91/EC		

Pedder Property Ltd trading as Pedder for themselves and for the vendor/landlord of this property whose agents they are, give notice that (1) these particulars do not constitute any part of an offer or contract, (2) all statements contained within these particulars are made without responsibility on the part of Pedder or the vendor/landlord, (3) whilst made in good faith, none of the statements contained within these particulars are to be relied upon as a statement of representation or fact, (4) any intending purchaser/tenant must satisfy him/herself by inspection or otherwise as to the correctness of each of the statements contained within these particulars, (5) the vendor/landlord does not make or give either Pedder or any person in their employment any authority to make or give representation or warranty whatsoever in relation to this property.